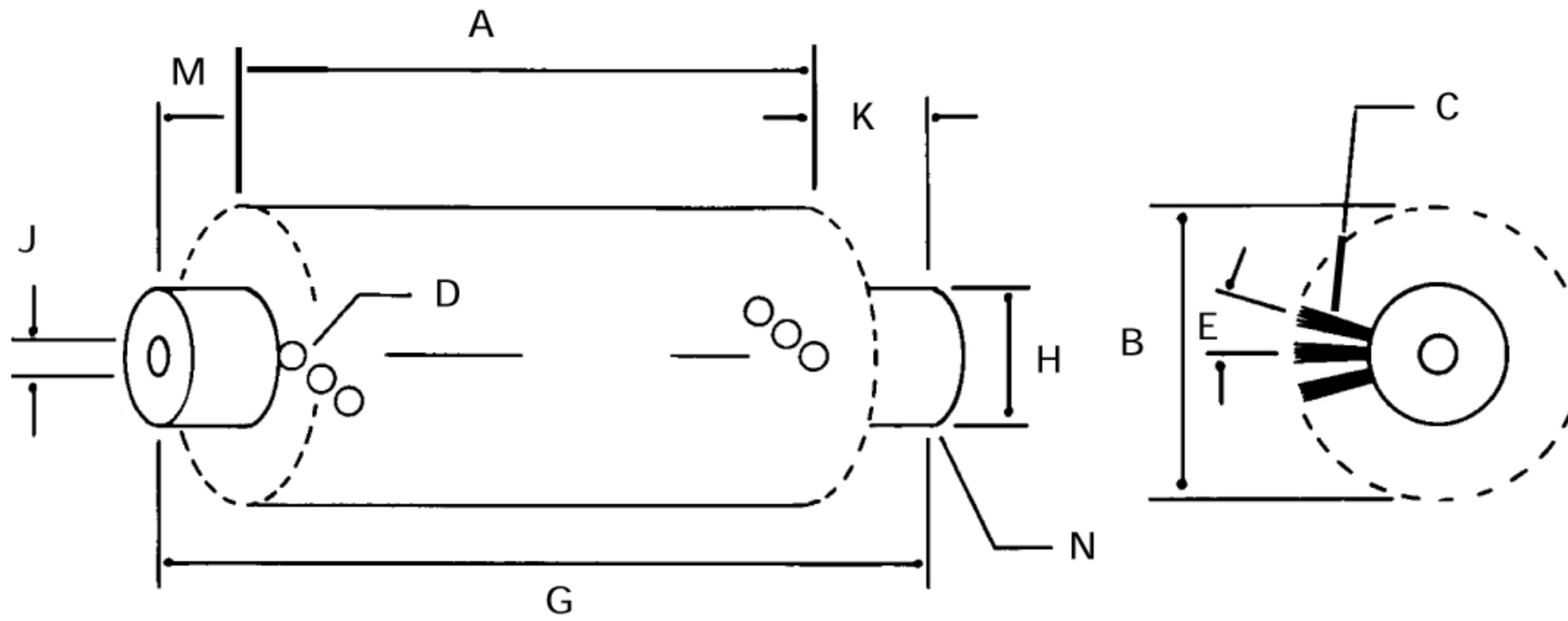
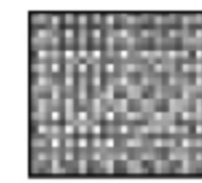


DESIGN SHEET: CYLINDER BRUSHES

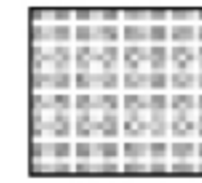


- A. Brush Face Length _____
- B. Brush Diameter _____
- C. Fill Material Type _____
 Fill Diameter _____
 Fill Color _____
 Fill Style: Crimped or Level (straight)
 Fill Trim Length _____
- D. Hole Size Diameter _____
- E. Hole Spacing (From Center to Center):
 Tight Normal Loose
 Hole Pattern:
 Staggered Straight Herringbone
 Spiral
- F. Number of holes around rotation
 (length & width) _____
- G. Core Length _____
- H. Core Diameter _____
 Keyway: 1/4 3/16 1/8
 Set Screws: one end both ends
- J. Arbor Hole Size _____
- K. Set Back _____
- M. Set Back _____
 Spiral Brushes only (staple set)
 Distance for one rotation of bristle pattern _____
 Distance top to top (pitch) _____
- N. Core Material Type _____
 Shaft Material Type (if we provide) _____
 Shaft Length _____
- O. Quantity _____

Typical Brush Patterns:



Staggered



Straight



Herringbone



Spiral



3737 Capitol Avenue
 City of Industry, CA 90601

CALL
(800) 933-0933

phone : (323) 724-7777
 fax : (323) 724-1111
 email : sales@gordonbrush.com
 web : www.gordonbrush.com

NAME _____ COMPANY _____ PHONE _____